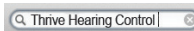


Thrive for Apple Devices: Setup

Downloading the Thrive Hearing Control App for Apple Devices

The Thrive™ Hearing Control app makes it easy to control and adjust your hearing aids with your compatible Apple® device. Downloading the app is easy. Follow the step-by-step instructions below:

1. On a compatible Apple device, open the **App Store**.
2. Type **Thrive Hearing Control** in the search box.
3. Tap **GET** to download the app to your device. Follow the screen prompts to set up the app.
4. Once the app has installed, open the **Thrive Hearing Control app** from your home screen or Apps List.

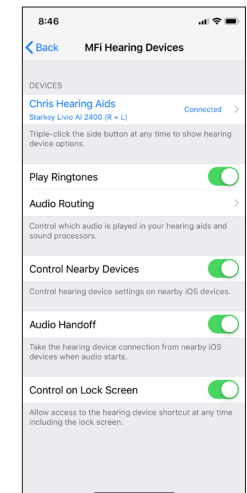
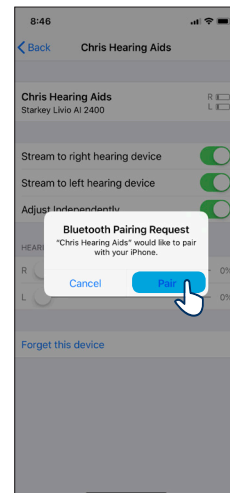
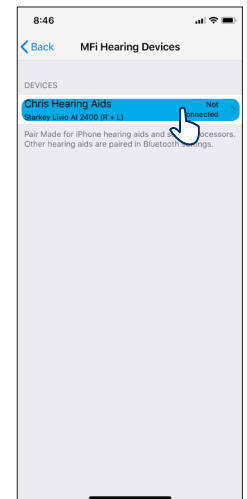
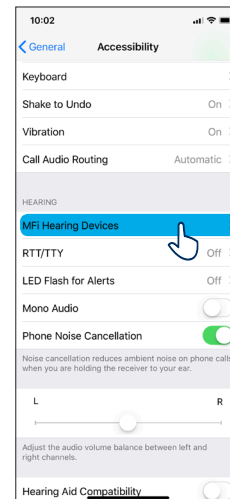


NOTE: All smartphone compatible hearing aids can be paired with up to five Apple devices, but can only be connected to one Apple device at a time. To switch to another paired Apple device, turn Bluetooth® off on the original device and the smartphone compatible hearing aids will then communicate with the next paired Apple device with Bluetooth on.

Pairing Hearing Aids to Apple Device

In order to use the Thrive Hearing Control app, you must first pair your hearing aids with your iOS device.

1. Ensure Bluetooth is enabled on your iOS device. Within the Settings menu go to Bluetooth and toggle to **On**.
2. Open and close the battery door on your hearing aids. This puts the hearing aids in pairing mode.
3. Within the Settings menu go to **General > Accessibility > MFi Hearing Devices**.
 - You will see your hearing aid name (e.g. “Chris Hearing Aids”) when the iOS device first discovers your hearing aids.
 - If your name does not appear in the “Devices” list within 5-7 seconds, tap **Accessibility** in the upper left corner, then tap **MFi Hearing Devices**.
4. Tap on the hearing aid name to connect your hearing aids to the iOS device.
5. You will see two pairing requests (one for each hearing aid). Select **Pair** for each request. These requests may be several seconds apart.
6. When pairing is complete, your hearing aid name will change from black to blue.



Pair Hearing Aids to Apple Device